

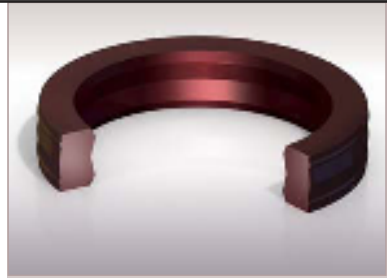
20K Rod and Piston Seals

Heavy duty bi-directional, low speed hydraulic sealing

Chesterton® 20K Duoseal is a continuous, bi-directional compression seal with dual independent sealing points. The robust, durable, dual lip profile was specifically designed for single groove cavities in heavy duty, high pressure, hydraulic applications.

The 20K Duoseals are made from our unique machining process which eliminates the need for tooling costs associated with new sizes. The heavy duty seal design has the ability to withstand pressure spikes while helping to reduce the effects of side loading.

Additional designs were developed to meet specific application and equipment needs including the incorporation of various anti-extrusion devices for combating excessive clearances and pressure spikes.

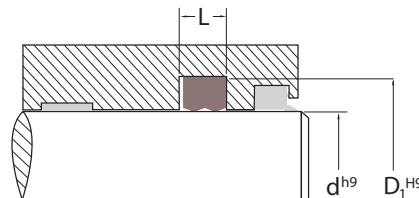
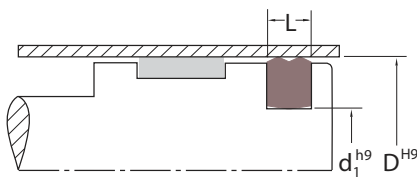


- *Double acting, high pressure, hydraulic applications >35 bar (500 psi)*
- *Ideal replacement for 2, 3, or 4 piece cap seal assemblies*
- *Unique manufacturing process allows the flexibility to create any size*
- *Sizes made to accommodate international standards including ISO and DIN*

SPECIFICATIONS



Material (designation)	Size Range mm (inch)	Temperature °C (°F)	Pressure bar (psi)	Speed m/s (ft/min)
AWC700 (FKM)	6 to 152 (1/4 to 6)	-30 to 200 (-20 to 400)	345 (5,000)	0.75 (150)
AWC800 (EU)	6 to 1320 (1/4 to 52)	-50 to 85 (-60 to 185)	1035 (15,000)	0.5 (100)
AWC830 (EU)	6 to 254 (1/4 to 10)	-35 to 75 (-30 to 165)	520 (7,500)	0.5 (100)
AWC860 (EU)	6 to 508 (1/4 to 20)	-50 to 120 (-60 to 250)	1035 (15,000)	0.62 (125)



PRODUCT PROFILES:



To place an order:

Product profile: _____
 Material: _____
 Rod or ram diameter (d): _____
 Bore diameter (D₁): _____
 Groove height (L): _____

To place an order:

Product profile: _____
 Material: _____
 Piston groove diameter (d₁): _____
 Cylinder bore diameter (D): _____
 Groove height (L): _____



GLOBAL SOLUTIONS, LOCAL SERVICE

Since its founding in 1884, A.W. Chesterton Company has successfully met the critical needs of its diverse customer base. Today, as always, customers count on Chesterton solutions to increase equipment reliability, optimize energy consumption, and provide local technical support and service wherever they are in the world.

Chesterton's global capabilities include:

- Servicing plants in over 100 countries
- Global manufacturing operations
- More than 500 Service Centers and Sales Offices worldwide
- Over 1200 trained local Service Specialists and Technicians

Visit our website at
www.chesterton.com

Chesterton ISO certificates available on www.chesterton.com/corporate/iso

Technical data reflects results of laboratory tests and is intended to indicate general characteristics only.
A.W. CHESTERTON COMPANY DISCLAIMS ALL WARRANTIES EXPRESSED, OR IMPLIED, INCLUDING WARRANTIES OF MERCHANTABILITY AND FITNESS FOR A PARTICULAR PURPOSE OR USE. LIABILITY, IF ANY, IS LIMITED TO PRODUCT REPLACEMENT ONLY.
ANY IMAGES CONTAINED HEREIN ARE FOR GENERAL ILLUSTRATIVE OR AESTHETIC PURPOSES ONLY AND ARE NOT INTENDED TO CONVEY ANY INSTRUCTIONAL, SAFETY, HANDLING OR USAGE INFORMATION OR ADVICE RESPECTING ANY PRODUCT OR EQUIPMENT. PLEASE REFER TO RELEVANT MATERIAL SAFETY DATA SHEETS, PRODUCT DATA SHEETS AND/OR PRODUCT LABELS FOR SAFE USE, STORAGE, HANDLING AND DISPOSAL OF PRODUCTS OR CONSULT WITH YOUR LOCAL CHESTERTON REPRESENTATIVE.



DISTRIBUTED BY:

860 Salem Street
Groveland, MA 01834 USA
Telephone: 781-438-7000
Fax: 978-469-6528
www.chesterton.com

© A.W. Chesterton Company, 2009. All rights reserved.
® Registered trademark owned and licensed by
A.W. Chesterton Company in USA and other countries.

FORM NO. EN22245

PRINTED IN USA 7/09