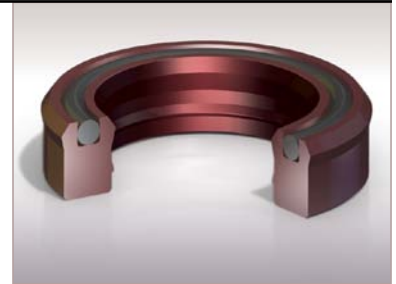


22KE Rod and Piston Seals

Energized dual component for added stability

The Chesterton® 22KE is a single-acting, continuous U-cup design which incorporates the use of an O-ring to increase pre-load capabilities. The O-ring energizes the seal in the absence of system pressure and provides stability at higher temperatures. This seal design is offered as a rod or piston seal and provides excellent performance in hydraulic applications.

The 22KE design is manufactured using a machining process which allows the flexibility to create any size based on equipment dimensions. The special seal lip geometry provides an optimal preload to maximize performance while the negative rake design eases installation.

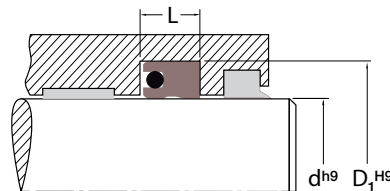
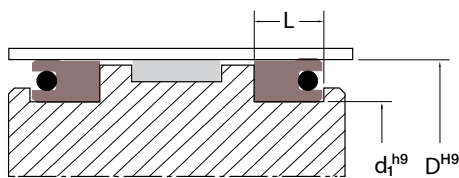


- *Single-acting U-cup design, zero leakage throughout the entire operating range*
- *O-ring loader energizes seal and provides stability at higher pressures*
- *Abrasion-resistant design, excellent performance in hydraulic applications*
- *Lip geometry stabilizes seal to prevent rolling and eases installation*
- *Machining process allows the flexibility to create any size*

SPECIFICATIONS

*Material (designation)	Size Range mm (inch)	Temperature °C (°F)	Pressure bar (psi)	Speed m/s (ft/min)
AWC700 (FKM)	6 to 152 (1/4 to 6)	-30 to 200 (-20 to 400)	345 (5,000)	1.5 (300)
AWC800 (EU)	6 to 1320 (1/4 to 52)	-50 to 85 (-60 to 185)	1035 (15,000)	0.9 (185)
AWC830 (EU)	6 to 254 (1/4 to 10)	-35 to 75 (-30 to 165)	520 (7,500)	0.9 (185)
AWC860 (EU)	6 to 508 (1/4 to 20)	-50 to 120 (-60 to 250)	1035 (15,000)	1.25 (250)

*O-ring material is FKM



PRODUCT PROFILES:



To place an order:

Product profile: _____
 Material: _____
 Rod or ram diameter (d): _____
 Diameter (D₁): _____
 Groove height (L): _____

To place an order:

Product profile: _____
 Material: _____
 Piston groove diameter (d₁): _____
 Cylinder bore diameter (D): _____
 Groove height (L): _____



GLOBAL SOLUTIONS, LOCAL SERVICE

Since its founding in 1884, A.W. Chesterton Company has successfully met the critical needs of its diverse customer base. Today, as always, customers count on Chesterton solutions to increase equipment reliability, optimize energy consumption, and provide local technical support and service wherever they are in the world.

Chesterton's global capabilities include:

- Servicing plants in over 100 countries
- Global manufacturing operations
- More than 500 Service Centers and Sales Offices worldwide
- Over 1200 trained local Service Specialists and Technicians

Visit our website at
www.chesterton.com



Chesterton ISO certificates available on www.chesterton.com/corporate/iso

Technical data reflects results of laboratory tests and is intended to indicate general characteristics only.
A.W. CHESTERTON COMPANY DISCLAIMS ALL WARRANTIES EXPRESSED, OR IMPLIED, INCLUDING WARRANTIES OF MERCHANTABILITY AND FITNESS FOR A PARTICULAR PURPOSE OR USE. LIABILITY, IF ANY, IS LIMITED TO PRODUCT REPLACEMENT ONLY.
ANY IMAGES CONTAINED HEREIN ARE FOR GENERAL ILLUSTRATIVE OR AESTHETIC PURPOSES ONLY AND ARE NOT INTENDED TO CONVEY ANY INSTRUCTIONAL, SAFETY, HANDLING OR USAGE INFORMATION OR ADVICE RESPECTING ANY PRODUCT OR EQUIPMENT. PLEASE REFER TO RELEVANT MATERIAL SAFETY DATA SHEETS, PRODUCT DATA SHEETS AND/OR PRODUCT LABELS FOR SAFE USE, STORAGE, HANDLING AND DISPOSAL OF PRODUCTS OR CONSULT WITH YOUR LOCAL CHESTERTON REPRESENTATIVE.



DISTRIBUTED BY:

860 Salem Street
Groveland, MA 01834 USA
Telephone: 781-438-7000
Fax: 978-469-6528
www.chesterton.com

© A.W. Chesterton Company, 2009. All rights reserved.
® Registered trademark owned and licensed by
A.W. Chesterton Company in USA and other countries.

FORM NO. EN22249

22KE EPS DATA SHEET - ENGLISH

PRINTED IN USA 9/11